

A NEST OF LUXURIOUS PEACE



SHIVALIK LAKE VIEW

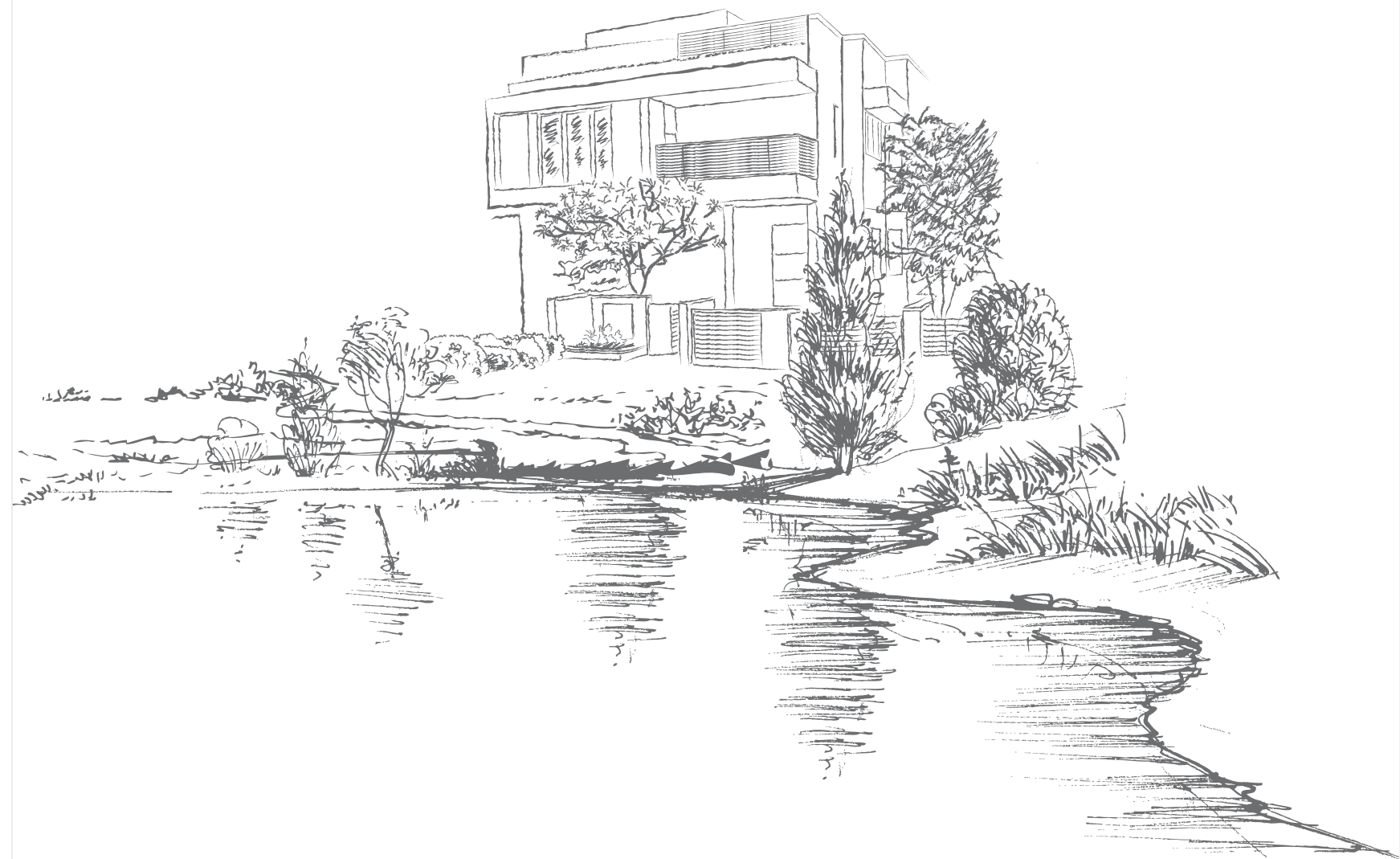
4 BHK LUXURIOUS BUNGALOWS

MANIPUR

SHIVALIK LAKE VIEW

4 BHK LUXURIOUS BUNGALOWS

Privacy and Peace are the most luxurious amenities one can ask for in a world filled with people and pandemonium. These comforts are often sought but rarely attained. Everything is about to change with Shivalik Lake View. These 4 BHK bungalows boast lavish luxuries in a lush landscape and are your own private serenity. Here, leisure kisses the nature.







OWN A 4 BHK BUNGALOW WITH
A LUSH PRIVATE GARDEN





SITE PLAN



TYPE A

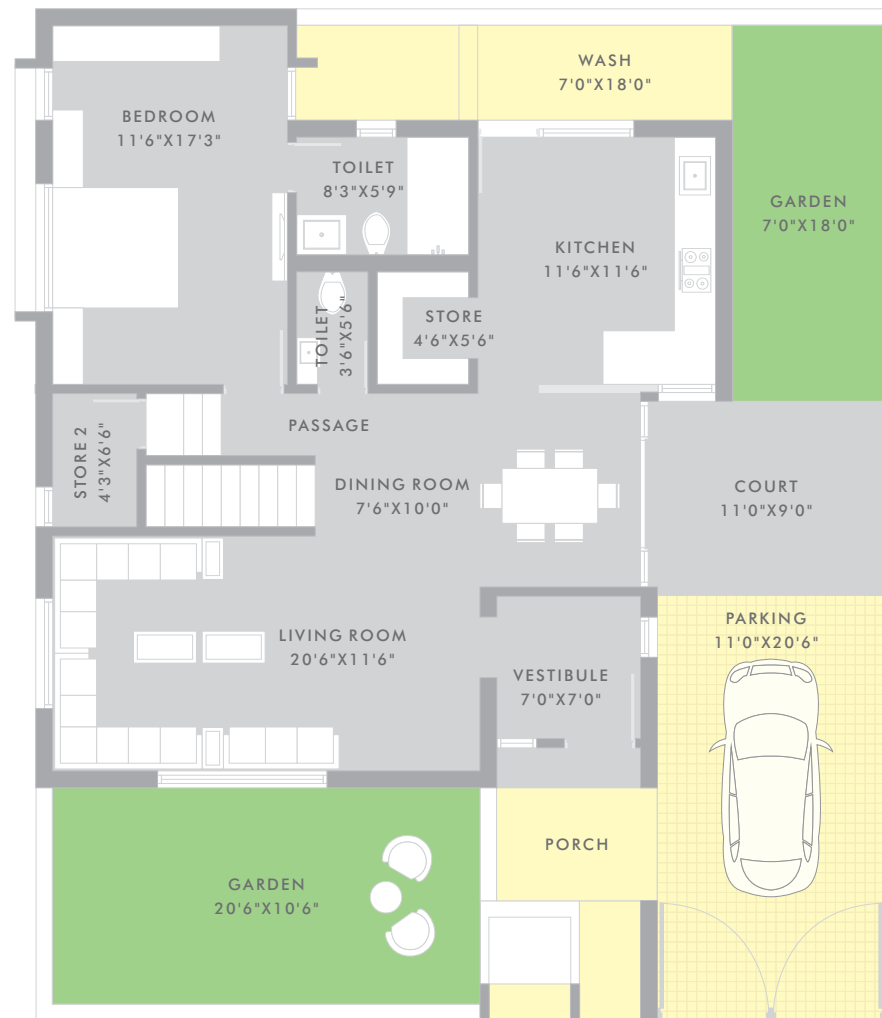


TYPE B

SHIVALIK LAKE VIEW

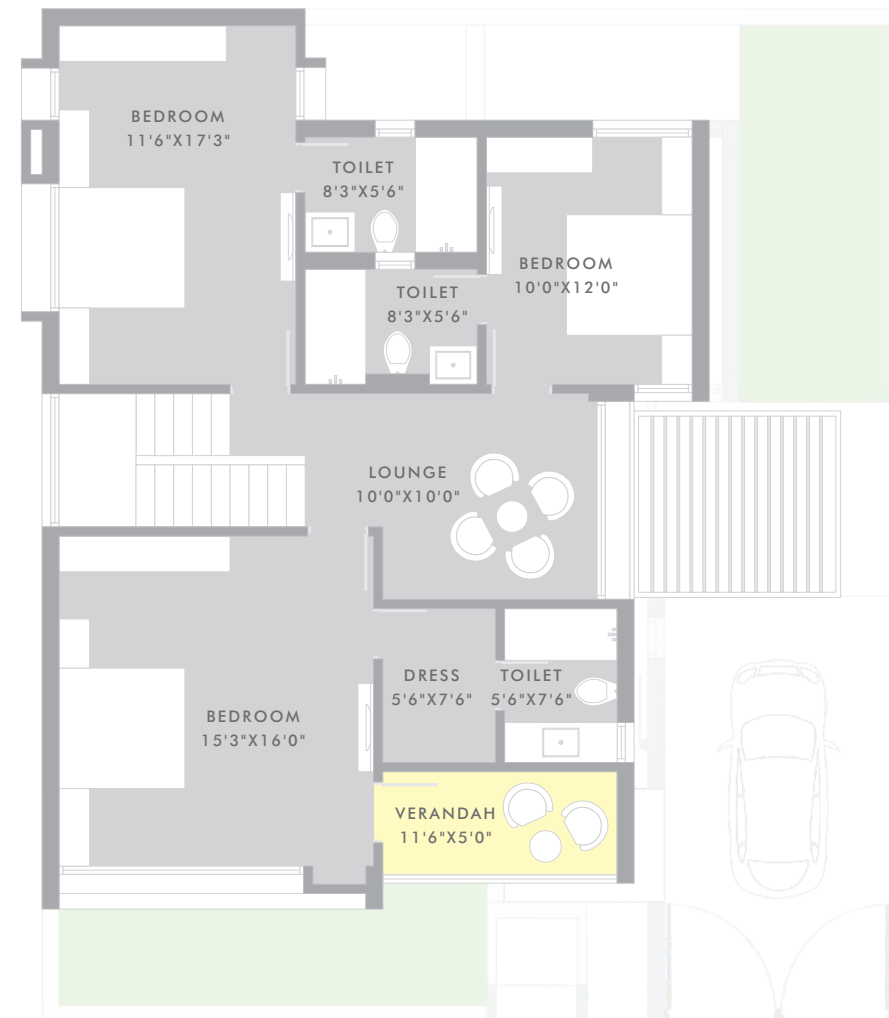
4 BHK LUXURIOUS BUNGALOWS





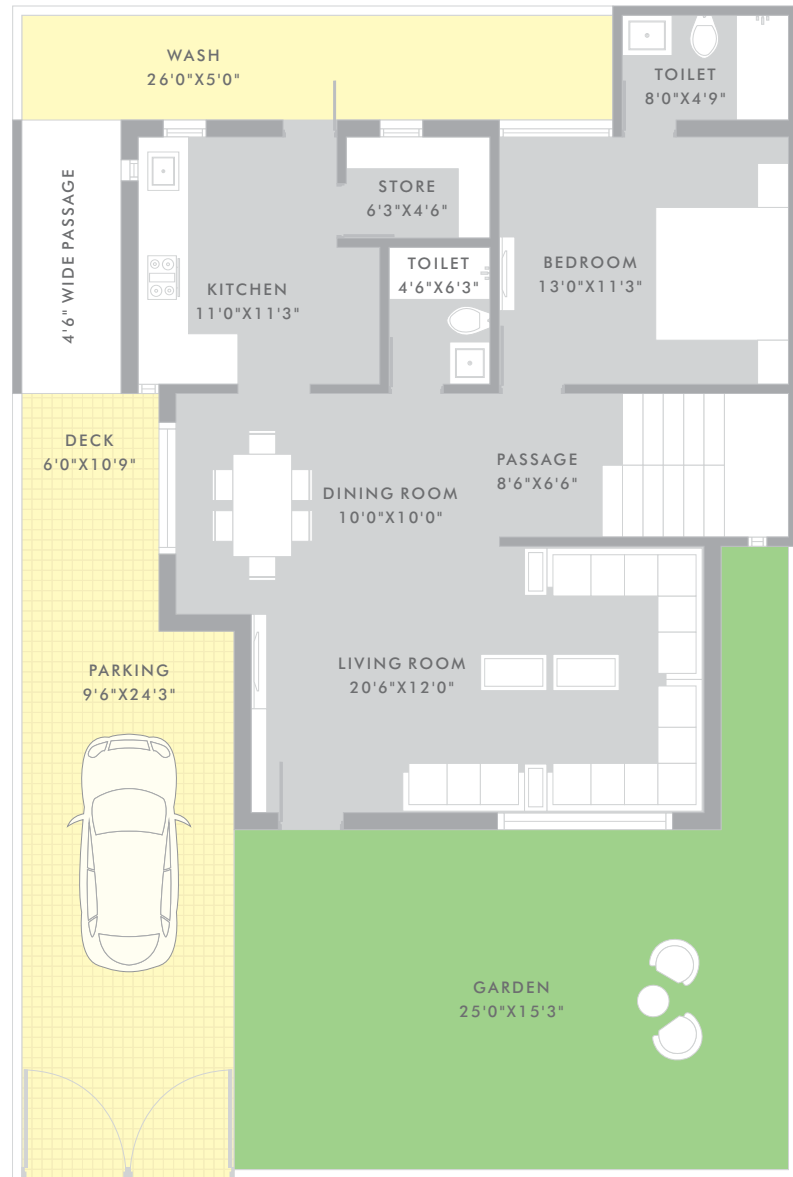
TYPE - A
PLAN FOR BUNGALOW NO. 14

GROUND FLOOR PLAN



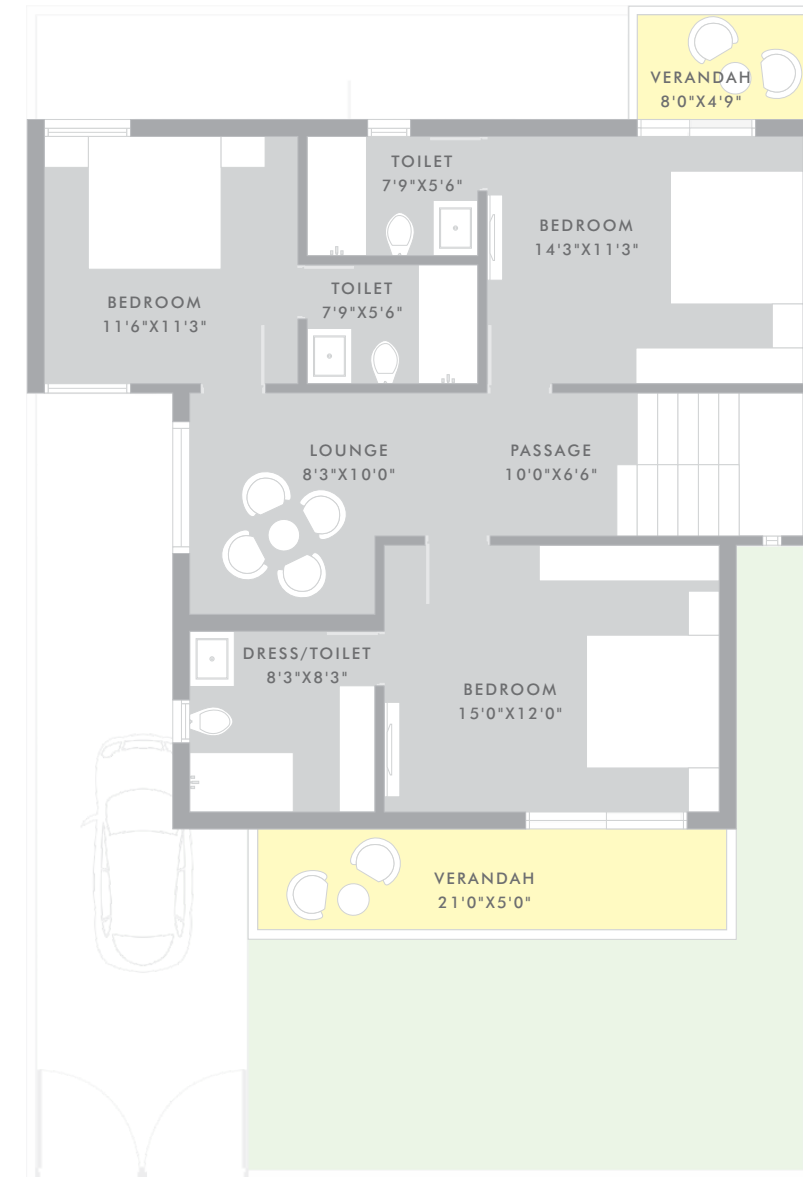
TYPE - A
PLAN FOR BUNGALOW NO. 14

FIRST FLOOR PLAN



TYPE - B
PLAN FOR BUNGALOW NO. 36

GROUND FLOOR PLAN



TYPE - B
PLAN FOR BUNGALOW NO. 36

FIRST FLOOR PLAN

SALIENT FEATURES

- LOCATED AT PEACEFUL LOCALITY NEAR MANIPUR LAKE
- EARTHQUAKE RESISTANT STRUCTURAL DESIGN
- INTERNAL RCC/PAVED ROADS WITH PROPER LIGHTING
- ROUND THE CLOCK SECURITY SERVICE
- COMMON BORE WELL FOR UNINTERRUPTED WATER SUPPLY
- HYDRO-PNEUMATIC PRESSURE SYSTEM FOR OVER HEAD TANKS
- RAIN WATER HARVESTING
- SOLAR WATER HEATER SYSTEM
- ATTRACTIVE MAIN ENTRANCE GATE WITH WELL-MANNED SECURITY CABIN

KIDS PLAY AREA	SENIOR CITIZEN SEATING DECK
CLUB HOUSE	LANDSCAPED GARDEN
INDOOR GAMES	JAIN DERASAR



SPECIFICATIONS

WALLS

- EXTERNAL DOUBLE COAT PLASTER WITH ACRYLIC PAINT
- INTERIOR MALA PLASTER (WITH PUTTY FINISH)

DOOR & WINDOWS

- DECORATIVE MAIN DOOR WITH WOODEN FRAME
- INTERNAL FLUSH DOORS
- FULLY ANODIZED ALUMINIUM SLIDING WINDOWS WITH GRANITE SEAL

FLOORING

- VITRIFIED FLOORING IN DRAWING, DINING, BEDROOMS AND KITCHEN
- RUSTIC TILES IN BALCONY
- GRANITE STAIRCASE
- MASTER BEDROOM WOODEN FLOORING

KITCHEN

- GRANITE PLATFORM
- TILES DADO UP TO LINTEL LEVEL
- STORE WITH KOTA STONE SHELVES
- WASH AREA PAVED IN KOTA STONE

TOILETS

- DESIGNER TILES IN ALL TOILETS UP TO LINTEL LEVEL
- BRANDED BATH FITTING
- STANDARD QUALITY OF SANITARY WARE
- OVERHEAD WATER TANK

ELECTRIFICATION

- CONCEALED COPPER WIRING WITH MODULAR SWITCHES
- ADEQUATE POWER SUPPLY FROM GEB

TERRACE

- CHINA MOSAIC IN TERRACE AREA FOR WATER PROOFING & HEAT RESISTANCE

PR/GJ/AHMEDABAD/SANAND/AUDA/RAA05388/040519
PR/GJ/AHMEDABAD/SANAND/AUDA/RAA05694/110719
www.gujrera.gujarat.gov.in

TERMS

- All rights are reserved by the developers to make any changes in plan, elevations and other details which will be binding to all the members.
- In order to maintain the aesthetics of the bungalows at a very high level, installation of AC units will be permitted at the designated spots and nowhere else, changes which effect the elevation & structure system shall not be permitted for all times to come.
- Encroachment, in any form, outside the defined units shall not be allowed.
- All dimensions shown in the plans are approximate, average unfinished and subject to variations.
- All the payments shall be in favor of “**Bhikhubhai Infrastructure LLP**”

The above information is indicative of proposed development and is issued in good faith for guidance only and not to be considered as part of any document.



FOR INQUIRY

CALL: 75750 07340

SITE: Opp. Sanskardham Lane, Nr. Manipur Lake, Bhopal-Ghuma Road, A'bad.
www.shivalikgroup.com/lakeview



SCAN
TO
KNOW
MORE

SHIVALIK[®]
 BUILDING LANDMARKS

Head Office: Shivalik House,
 B/s. Satellite Police Station, Ramdevnagar Cross Road, Ahmedabad-15
 Tel: 079 4020 0000, Web: www.shivalikgroup.com | [f](#) [t](#) [in](#) [@](#)